

ISSN : 2088-0197  
e-ISSN : 2355 - 8989

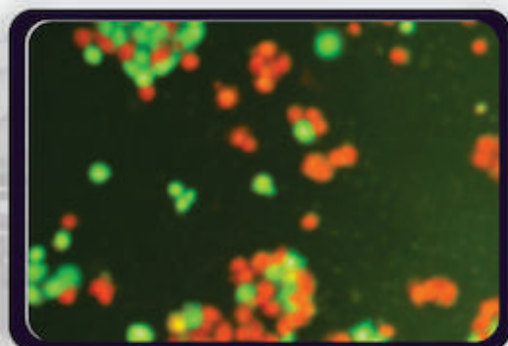
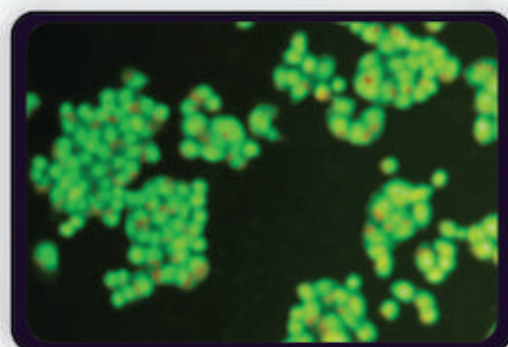


Faculty of Pharmacy



# Indonesian Journal of Cancer Chemoprevention

Vol. 6, No. 2, June 2015



The Official Journal of  
Indonesian Society for Cancer Chemoprevention



## INDONESIAN JOURNAL OF CANCER CHEMOPREVENTION

### Editor in Chief

Dr. Arry Yanuar, M.Si., Apt.

### Vice

Dr. Riris Istighfari Jenie, M.Si., Apt.

### Secretary

Dr. Rumiati, M.Si., Apt.

Muthi Ikawati, M.Sc., Apt.

### Editors

Dr. Muhammad Da'i, M.Si., Apt.

Dr. rer. nat. Endang Lukitaningsih, M.Si., Apt.

Dr. Med. dr. Indwiani Astuti

### Board Reviewing Editors

Prof. Dr. Edy Meiyanto, M.Si., Apt

*(Cancer Chemoprevention Research Center, Faculty of Pharmacy, Universitas Gadjah Mada, Yogyakarta)*

Prof. Dr. Umar Anggara Jenie, M.Sc., Apt.

*(Faculty of Pharmacy, Universitas Gadjah Mada, Yogyakarta)*

Prof. drg. Ferry Sandra, D.D.S., Ph.D., L.F.I.B.A.

*(Prodia Laboratory)*

Prof. Dr. Sugiyanto, SU., Apt.

*(Faculty of Pharmacy, Universitas Gadjah Mada, Yogyakarta)*

Prof. Dr. Sukardiman, SU., Apt.

*(Faculty of Pharmacy, Universitas Airlangga, Surabaya)*

Prof. Dr. Adek Zamrud Adnan, M.Sc., Apt.

*(Faculty of Pharmacy, Universitas Andalas, Padang)*

Prof. Dr. Sismindari, SU., Apt.

*(Faculty of Pharmacy, Universitas Gadjah Mada, Yogyakarta)*

Prof. Masashi Kawaichi, MD., Ph.D.

*(Laboratory of Gene Function in Animals, Graduate School of Biological Sciences, Nara Institute of Science and Technology, Nara, Japan)*

Prof. Hiroshi Itoh, Pharmacist, Ph.D.

*(Laboratory of Signal Transduction, Graduate School of Biological Science, Nara Institute of Science and Technology, Nara, Japan)*

Dr. Restu Syamsul Hadi, M.Kes.

*(Faculty of Medicine, YARSI University)*

Ken Tanaka, PhD.

*(Division of Pharmacognosy, Department of Medicinal Resources, Institute of Natural Medicine, University of Toyama, Japan)*

Prof. Wichai Cherdshewasart

*(Department of Biology, Faculty of Science at Chulalongkorn University, Bangkok, Thailand)*

### Business Manager

Raisatun Nisa Sugiyanto, S.Farm., Apt.

Yonika Arum Larasati, S.Farm., Apt.

Herwandhani Putri, M. Sc., Apt.

Anindyajati, M.Sc., Apt.

### Layouter and Setting

Rizky Haqsari, S.Pd.

### Editorial Office

Faculty of Pharmacy, Universitas Gadjah Mada Yogyakarta, Sekip Utara, Yogyakarta, Indonesia 55281

Telp. (+62-274) 6492662, Fax. (+62-274) 543120

Email : [iscc2010@ymail.com](mailto:iscc2010@ymail.com)

Bank : Bank BNI

Branch : Cabang UGM, Yogyakarta

Account No. : 0205640096

Account Name : Muthi Ikawati

### Published by

Indonesian Society for Cancer Chemoprevention (ISCC)

Cover Picture :

**"Cytotoxic Effect of Jati Belanda  
Leaves...**

(see Da'i *et al.* pages 35-41 )



## INDONESIAN JOURNAL OF CANCER CHEMOPREVENTION ARTICLES

- Cytotoxic Effect of Jati Belanda Leaves towards Cancer Cell Lines  
(Muhammad Da'i) 35-41
- The Combination of High Calcium Milk with *Citrus maxima* Peels Ethanolic Extract Increased Bone Density of Ovariectomized Rats  
(Ragil S. Dianingati, Annisa Novarina, Amanita K. Hana, Laeli Muntafi'ah, and Endang Lukitaningsih) 42-48
- Antituberculosis and Toxicity Assay of ethanolic extract of mimba cortex (*Azadirachta indica* JUSS.)  
(Cut Fatimah, Erfan Wahyudi, and Ernawati) 49-52
- Cardioprotective Effect of Kelor (*Moringa oleifera*) Leaf Ethanolic Extract against Doxorubicin-Induced Cardiotoxicity in Rats  
(Fikriansyah, Mentari Widiastuti, Nindi Wulandari, Prisnu Tirtanirmala, and Retno Murwanti) 53-57
- Brazilein Increased Cytotoxic Activity of Doxorubicin on MCF-7/DOX Cells  
(Ni Putu Linda Laksmiani, Ratna Asmah Susidarti, and Edy Meiyanto) 58-63
- Synergistic Effect of Arecoline in Combination with Doxorubicin on HeLa Cervical Cancer Cells  
(Astrid Ayu Maruti, Fikri Amalia, and Edy Meiyanto) 64-70



## Preface

Indonesian Journal of Cancer Chemoprevention (IJCC) is an Indonesian leading journal in cancer chemoprevention with international level. We publish all aspects of cancer chemoprevention, including experimental and clinical pharmacology, cancer detections and also applications of stem cell technology, immunology research, *in vitro* and *in silico* exploration on chemoprevention mechanisms, screening of natural (plants, marine natural products, etc.) and synthetic chemopreventive agents, cultivation of chemopreventive plants and development of herbal dosage forms for chemoprevention, and development of herbal cosmetics formulation.

This issue contains various six articles related to the development of plant's compound as the source of chemoprevention agent. Da'i *et al* explored the *jati belanda* leaves activity by *in vitro* study. The study showed the cytotoxic effect of the agent on cancer cell lines. Dianingati *et al* conduct the *in vivo* study of the combination of High calcium milk with *Citrus maxima* peels ethanolic extract which showed the increase of bone density on ovariectomized rats. Other study on antituberculosis and toxicity effect of *mimba* cortex was conducted by Fatimah *et al*. An interesting study also was done by Fikriyansyah *et al* which showed that *kelor* leaf ethanolic extract has cardioprotective effect against doxorubicin-induced toxicity in rats. In this issue, another *in vitro* experiment were done by Laksmani *et al* on brazilein that induced cytotoxic activity of doxorubicin on MCF-7/DOX Cells, and also Maruti *et al* which reported that arecoline has synergistic effect in combination Tin doxorubicin on HeLa cervical cancer cells.

We wish to thank the authors contributed in this issue. Editors encourage other researchers to explore more combination chemotherapy agent and molecular mechanisms, and published the articles in IJCC.

Sincerely,

Dr. Arry Yanuar, M.Si., Apt.

*Editor-in-Chief, Indonesian Journal of Cancer Chemoprevention (IJCC)*



9 772088 019045